

INSIDE THIS ISSUE:

>FPAN 2
ACTIVITIES

>VOLUNTEER 2
UWF & FPAN

>JOIN THE 2
FLORIDA
ANTHROPO-
LOGICAL

Recap of PAS 3
Summer
Activities

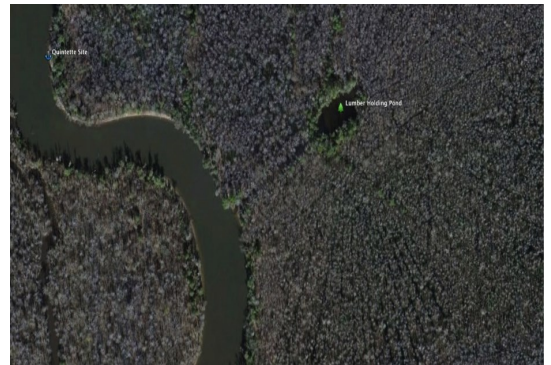
COMING 4
EVENTS

Draglines and Bunkhouses: The Archaeological Remains of Northwest Florida's Cypress Logging Industry

During the early 20th century, industrious woodsmen conducted extensive logging operations in Northwest Florida's wetlands to harvest cypress. Man-made canals and timber drag lines radiating like the spokes of a wagon wheel are still visible from the air and in the swamps today. Archaeological survey conducted in and along the banks of the Escambia River reveals not only the extent of the operations, but also the submerged remains of small lumber "barges" and what are interpreted as floating bunkhouses that may have provided lodging for the lumbermen.

On Sept. 9, Rebecca Booker -Demonbruen, UWF grad student, will present the results of her research on the logging operations in the Escambia River swamp. The meeting will be at 7 pm at the West Florida Regional Library downtown. Join us and bring a friend.

Aerial view (above) and ground view (below) showing man-made canals and drag lines.



WEBSITE FOR PAS
<http://pasfl.org>

RENEWAL FOR 2015 STARTS IN OCTOBER

PAS Membership

DUES ARE:

STUDENT \$6

INDIVIDUAL \$15

FAMILY \$20

LIFE \$200

MEMBERSHIP

PERIOD IS JAN. -

DEC EACH YEAR

NEWS FROM FPAN NORTHWEST REGION

Nicole (Bucchino) Grinnan, Outreach Coordinator Northwest Region based at the Florida Public Archaeology Network Center; Dr. William Lees, Executive Director FPAN; and Dr. Della Scott-Ireton, Associate Director FPAN, contribute periodically to this newsletter.

FPAN offers far too many local and regional activities to list them here. Find something to do near you by subscribing to their newsletter or by using the following:

FPAN Website: <http://flpublicarchaeology.org>

Facebook: www.facebook.com/FPANnorthwest

Twitter: www.twitter.com/FPANNorthwest



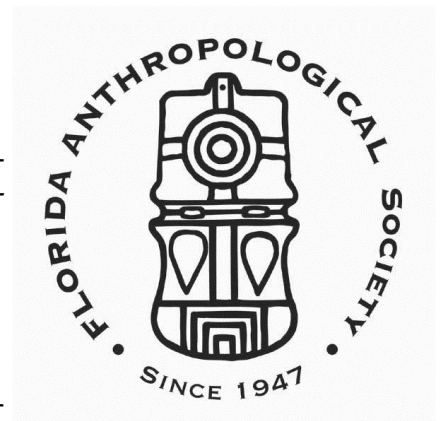
VOLUNTEER OPPORTUNITIES

1. University of West Florida Archaeology Lab - Beginning 9/17 the lab will open Wednesdays and Fridays 10am-noon & 1-3 pm for students & volunteers. Parking tag required on campus. For more info call 474-2087.
2. Florida Public Archaeology Network Lab— Work days at the lab downtown are Monday and Wednesday 10 am to 4 pm for the fall. The lab is open now.

No experience is necessary and a brief orientation will get you started.

FLORIDA ANTHROPOLOGICAL SOCIETY

PAS is a member of the Florida Anthropological Society (FAS). Twenty five members of PAS are also FAS members. You must join FAS individually to receive the journal, *The Florida Anthropologist*, and the *FAS Newsletter*. See the FAS website for more information: <http://www.fasweb.org>
Dues are: Regular and Institutional - \$30, Family - \$35, Student - \$15 (with copy of current student id). **Applications available at PAS membership meetings each month.



PAS SUMMER 2014 ACTIVITIES

PAS members participated in a number of extra activities this summer to get together during the “slow” months when many are on vacation or staying in out of the heat.

On June 7 PAS volunteers worked at the Open House in Historic Pensacola Village and behind the TT Wentworth, Jr Museum. We talked to the public about archaeology in our area and encouraged visitors to join us for our meetings and other activities.

On Tuesday June 17, a group of PAS members visited UWF to see the Archaeology Institute’s museum as well as the conservation and teaching labs in building 13. UWF archaeologists were our hosts and tour guides.

On Tuesday July 15, UWF archaeologists took PAS members on a field trip to Mission San Joseph de Escambe in Molino. We got the first class tour and managed to avoid the rain for the morning. We had planned to eat lunch at the Arcadia Mill Archaeological Site and tour the excavations there, but a summer thunderstorm cut the day short. We enjoyed a nice picnic lunch at the pavilion of the Molino boat ramp instead.

On Tuesday, August 16 PAS members took a trip to Fort Walton Beach Indian Temple Mound Museum. The group enjoyed the guidance of Gail Meyer, the director, and saw the permanent exhibits. In addition, the museum is hosting the ArtCalusa exhibit that opened in November in Fort Myers. After an interesting tour we had a good lunch at the Board Room across the street.

If you missed these group trips, you missed some informative and fun times. We are already thinking about plans for next summer. Do you have any ideas for our next trips?



DID YOU RECOGNIZE THE MYSTERY ARTIFACTS?

THE MYSTERY ARTIFACTS FROM THE LAST NEWSLETTER WERE 18TH CENTURY TOBACCO PIPES MADE FROM WHITE BALL CLAY. THESE MOLDED PIPES HAD A SMALL BOWL AND A LONG STEM. THEY WERE QUITE FRAGILE AND WE HAVE RECOVERED HUNDREDS FROM DOWNTOWN PENSACOLA.

WEBSITE FOR PAS
<http://pasfl.org>

COMING EVENTS

FOR MORE INFO, VISIT US AT OUR **WEBSITE** <http://pasfl.org>

2014

**SEPT. 9, TUESDAY Draglines and Bunkhouses: The Archaeological
Remains of Northwest Florida's Cypress Logging Industry**

Rebecca Booker-Demonbreun, UWF Graduate Student
7 PM, West Florida Regional Library, downtown

SEPT 2, TUES PAS Board meeting, 4:30 PM, Archaeology Institute, UWF
Members are welcome to attend.

OCT 14 The Evolution of Underwater Archaeology in Madagascar
and the *Serapis* Project
Norine Carroll, UWF Archaeology Institute

MEETING SPACE SEPTEMBER - MARCH COURTESY OF



PENSACOLA ARCHAEOLOGICAL SOCIETY
PO BOX 13251
PENSACOLA, FL 32591

A Chapter of the Florida Anthropological Society